



OPEN

# Assessment of prokaryotic communities in Southwestern Atlantic deep-sea sediments reveals prevalent methanol-oxidising *Methylomirabilales*

Francielli V. Peres<sup>1</sup>, Fabiana S. Paula<sup>1✉</sup>, Amanda G. Bendia<sup>1</sup>, Júlia B. Gontijo<sup>2</sup>, Michel M. de Mahiques<sup>3</sup> & Vivian H. Pellizari<sup>1</sup>

Continental slopes can play a significant contribution to marine productivity and carbon cycling. These regions can harbour distinct geological features, such as salt diapirs and pockmarks, in which their depressions may serve as natural sediment traps where different compounds can accumulate. We investigated the prokaryotic communities in surface (0–2 cm) and subsurface (18–20 or 22–24 cm) sediments from a salt diapir and pockmark field in Santos Basin, Southwest Atlantic Ocean. Metabarcoding of 16 samples revealed that surface sediments were dominated by the archaeal class Nitrososphaeria, while the bacterial class Dehalococcoidia was the most prevalent in subsurface samples. Sediment strata were found to be a significant factor explaining 27% of the variability in community composition. However, no significant difference was observed among geomorphological features. We also performed a metagenomic analysis of three surface samples and analysed the highest quality metagenome-assembled genome retrieved, which belonged to the family CSP1–5, phylum *Methylomirabilota*. This non-methanotrophic methylophile contains genes encoding for methanol oxidation and Calvin Cycle pathways, along with diverse functions that may contribute to its adaptation to deep-sea habitats and to oscillating environmental conditions. By integrating metabarcoding and metagenomic approaches, we reported that CSP1–5 is prevalent in the sediment samples from Santos Basin slope, indicating the potential importance of methanol metabolism in this region. Finally, using a phylogenetic approach integrating 16S rRNA sequences assigned to *Methylomirabilota* in this study with those from a public database, we argued that CSP1–5 public sequences might be misclassified as *Methylomirabilaceae* (the methanotrophic clade) and, therefore, the role of these organisms and the methanol cycling could also be neglected in other environments.

The continental margins are complex and unique environments that interconnect terrestrial and marine processes, playing a significant role in the biogeochemical cycles of carbon and nitrogen<sup>1</sup>. Although continental shelves and slopes represent only 20% of the ocean area, these regions can account for up to 50% of marine productivity<sup>2,3</sup>. The mineralisation of organic matter in these areas occurs at a much faster rate when compared to what occurs in open sea sediments, allowing the regenerated nutrients to quickly return to their natural cycles<sup>4,5</sup>. Continental slopes often comprise a wide range of physical and geological features that can affect the nutrient distribution and, consequently, biodiversity<sup>6</sup>. This variability is particularly important for benthic microbial communities, which are known to respond to changes in nutrient availability and carbon substrate type<sup>7</sup>. As

<sup>1</sup>Department of Biological Oceanography, Oceanographic Institute, University of São Paulo, Praça do Oceanográfico, 191, São Paulo CEP: 05508-120, Brazil. <sup>2</sup>Cell and Molecular Biology Laboratory, Centre for Nuclear Energy in Agriculture, University of São Paulo, Piracicaba, Brazil. <sup>3</sup>Department of Physical, Chemical and Geological Oceanography, Oceanographic Institute, University of São Paulo, São Paulo, Brazil. ✉email: fabianaspaula@gmail.com

microbial processes are essential for ocean biogeochemistry and organic matter mineralization<sup>5</sup>, it is crucial to understand their roles in local and regional carbon cycles.

Santos Basin (SB) is a marginal basin located on the Southwestern Atlantic margin. In this region, the continental upper to middle slope presents high declivity and is marked by numerous kilometre-scale seafloor features, including pockmarks and exhumed salt diapirs<sup>8,9</sup>. Pockmarks are crater-like depressions formed by the sudden release of fluid (predominantly methane) in the form of a gas or liquid to the surface<sup>10,11</sup>. In Santos Basin, fluid expulsion is facilitated by moving large volumes of salt, weakening the upper sedimentary layers<sup>9</sup>. Due to gravitational forces, these salt masses show vertical movement (diapir), which may or may not be exposed on the marine sedimentary surface<sup>8,12</sup>. The pockmark field on the SB continental slope has been reported to contain more than nine hundred depressions related to this geological feature and salt diapirs. Although the majority of pockmarks in this area are thought to be not actively seeping gas, acoustic data, and metal proxies have suggested the presence of recent to sub-recent seepage activities in some of the pockmarks<sup>9,13–16</sup>. In addition, the unique characteristics of the seafloor in this area may provide a myriad of habitats for diverse but yet poorly explored microbial communities<sup>17</sup>.

Continental slopes often present high sediment accumulation and organic matter deposition<sup>9,18</sup>. In addition, the depressions as pockmarks may serve as natural sediment traps<sup>16</sup>, where the sedimentation of different compounds can occur, including methanol, a highly abundant reduced carbon in the marine environment<sup>19,20</sup>. This C1 hydrocarbon has a fast turnover in this environment, on the order of a few days, indicating its significance in biological cycles, mainly as a source of carbon and energy for methylotrophic microorganisms<sup>21,22</sup>.

Versatile metabolic capabilities provide the seafloor microbial communities with different strategies to couple with oligotrophic and variable conditions. The importance of C1 metabolism in deep-sea sediments has been recently suggested by Torres-Beltrán et al.<sup>23</sup>, including methanol oxidation to formaldehyde. The authors also detected functions related to formaldehyde oxidation on the continental slope of the southern Gulf of Mexico. Yet, the identity, metabolic capabilities, and distribution of these organisms demand further exploration. While some methylotrophic groups have been vastly studied, others have only recently emerged from metagenome-assembled genomes (MAGs). Hug et al.<sup>24</sup> described a genome of a non-methanotrophic methylotroph from the phylum Methylomirabolota (former NC10), a cluster mostly known for its nitrate-dependent methanotroph members, which has raised questions regarding the phylogenetic boundaries of the different methylotrophic groups in this phylum.

In this study, we used metabarcoding and metagenomics to investigate the prokaryotic diversity in surface and subsurface sediments collected at the pockmark and salt diapir field on the SB continental slope. In addition, through genome reconstruction from metagenomic data, we described the MAG of a methylotroph from the order Methylomirabilales, which was widespread across SB sediments. We further explored its adaptations to the deep-sea environment and then argued its potential metabolic capabilities and roles in the carbon cycle along the SB continental slope.

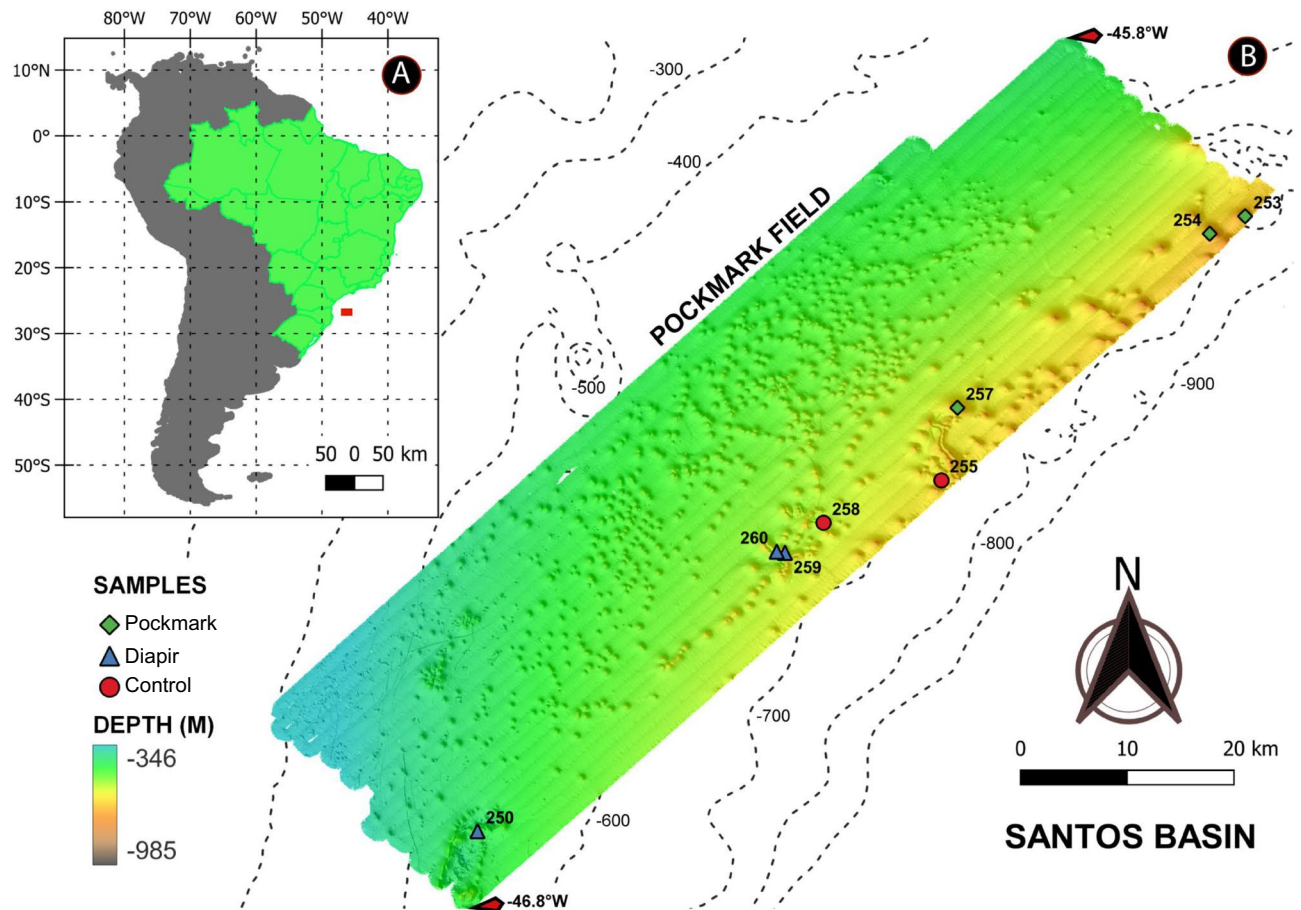
## Material and methods

**Study area and sediment sampling.** The Santos Basin (SB) is located on the southern continental margin of Brazil between latitudes 27° S and 26° N, covering an area of  $3.5 \times 10^5$  km<sup>2</sup>. SB is limited to the north by Alto de Cabo Frio and to the south by Cabo Santa Marta Grande in Alto de Florianópolis<sup>25</sup>. Under the hydrographic point of view, the area of study is localised in the transition between two water masses, the South Atlantic Central Water (SACW) and the Antarctic Intermediate Water (AAIW)<sup>33</sup>. The SACW ( $T \leq 18.5$  °C,  $S \geq 35.3$ ) occupies the pycnocline level, while the AAIW presents temperatures between 3 and 6 °C and salinities between 34.2 and 34.5<sup>26–28</sup>.

We collected sediment samples using a stainless-steel box corer BX-650 (Ocean Instruments, San Diego, California, USA) (50 cm × 50 cm) with a maximum penetration of 60 cm. Cylindric corers were used to collect sediments within the box corer while maintaining the sediment stratification. The sediment cores were sliced into 2 cm layers with sterile spatulas and placed in whirl pak bags, then stored at –20 °C until processing. For this study, we selected eight stations with bathymetry ranging from 400 to 800 m approximately, comprising three stations located in salt diapirs, three stations in pockmarks, and two stations in the adjacent marine seafloor considered as control sediments, without pockmarks and salt diapirs influence (Fig. 1). We used the superficial (0–2 cm) and the deepest sediment layer (16–18 or 22–24 cm), from now on called surface and subsurface strata, respectively (Table S1).

**Taxonomic profiling of the prokaryotic community.** DNA was extracted from 0.25 g of sediment using the Power Soil DNA Isolation Kit (Qiagen, Germany), following the manufacturer's specifications. DNA integrity was verified by electrophoresis in 1% (v/v) agarose gel, and concentration was assessed using the Qubit dsDNA HS assay kit (Thermo Fisher Scientific, Waltham, MA, USA). The V4–V5 hypervariable region of the 16S rRNA sequence was amplified with the universal primers 515F and 926R<sup>29,30</sup>. The initial PCR reaction consisted of a denaturation step at 95 °C for 3 min, followed by 35 cycles with 95 °C for 30 s, annealing at 57 °C for 30 s, extension at 72 °C for 30 s, and final extension at 72 °C for 5 min. Library preparation and sequencing were performed by Mr DNA/Molecular Research (Shallowater, TX, USA), using Illumina Miseq platform (2 × 250 bp system). 16S rRNA sequencing data are available in the National Center for Biotechnology Information Sequence Read Archives under BioProject ID PRJNA818533.

After sequencing, paired-end reads were initially imported and demultiplexed into the QIIME2 software version 2019.10<sup>31</sup>. Graphic inspection of quality profiles was performed, low-quality reads (below Phred score 30) were trimmed, and the chimeras were removed with the aid of the Dada2 software<sup>32</sup>. After quality control, the amplicon sequence variants (ASVs) were determined using the Dada2 software into the QIIME2 package.



**Figure 1.** Map of the study region located in the Santos Basin, highlighting the sampling sites where structures related to pockmarks and salt diapirs were found on the Brazilian continental margin.

Taxonomy was assigned through feature-classifier `classify-sklearn` and SILVA database v. 138. ASV richness, Chao1, and Shannon diversity indexes were calculated using `phyloseq`<sup>33</sup> and `vegan` packages<sup>34</sup>, and `ggplot2`<sup>33</sup> was used for graphing in R v. 4.1.0 (R Development Team, 2018). The normality of variances was assessed by Shapiro–Wilk test. Similarities among samples and site groups were examined using ordinated weighted Unifrac normalised distance and visualised by non-metric multidimensional scaling (NMDS). Alpha diversity, statistical analysis, and data visualisation were carried out in R using the `Phyloseq` package<sup>33</sup>. Differences in the microbial communities among sites and depths were assessed by permutational multivariate analysis of variance (PERMANOVA)<sup>35</sup>.

**Metagenomic analysis for metagenome-assembled genome (MAG) recovery.** We performed shotgun metagenomic analysis of three surface sediment samples from the following stations: 259 (diapir area), 260 (diapir area), and 255 (control area). The metagenomic libraries were prepared using Nextera XT DNA Library Prep Kit (Illumina, San Diego, CA, USA), and sequencing was performed in Illumina HiSeq platform (2 × 150 pb system) at the Woods Hole Institute’s Marine Biology Laboratory, as part of the “Deep Carbon Observatory’s Census of project Deep Life”. Raw reads were filtered through the SICKLE software with `phred > 30` and then used for genome reconstruction through the `anvi` pipeline v. 7.1<sup>34</sup>. Co-assembly was performed using the Megahit software<sup>36</sup>, and the contigs with size > 4000 bp were selected for binning through the CONCOCT software<sup>37</sup>. Bins were manually refined using `anvi-refine`<sup>34</sup> and then quality checked with CheckM v. 1.0.7<sup>38</sup>. MAGs were taxonomically classified based on genome phylogeny according to the `classify` workflow (`classify_wf`) from the Genome Taxonomy Database Toolkit (GTDB- Tk v. 1.3.0) and the Genome Taxonomy Database (GTDB; release 202)<sup>39</sup>. Metagenome raw sequences are available in the GenBank repository under BioProject ID PRJNA818670.

For further analyses, we selected the MAG with the highest quality scores, the SB\_MAG\_00001 (94.2% completeness and 2.1% contamination), classified within the Methylomirabilota phylum (formerly NC10 phylum). Prediction and annotation of ORFs were performed using `prokka` v.14.5<sup>40</sup>. Ghost-KOALA (genus\_ prokaryotes) and SEED Subsystem through RASTtk<sup>40</sup> were used for functional annotations of the predicted protein sequences. MetabolismHMM tool v. 1.9 (<https://github.com/elizabethmcd/metabolismHMM>) and DRAM (Distilled and Refined Annotation of Metabolism) tool v. 1.2.4 (<https://github.com/shafferm/DRAM>) were used to annotate genes related to sulphur, nitrogen, and carbon metabolisms. The coverage and relative abundance of the MAG

in relation to its co-assembly sequence library was estimated using Bowtie2 2.3.2<sup>41</sup>. The MAG was deposited in Figshare under <https://doi.org/10.6084/m9.figshare.20080031>.

**Construction of the phylogenetic tree.** A phylogenetic tree was built to verify the phylogenetic relationships among members of the Methyloirabilota phylum recovered from our sediment samples through metabarcoding and metagenomics. First, we selected all sequences assigned to this phylum found in our 16S rRNA sequencing data (23 ASVs), and then extracted the 16S rRNA sequence from the MAG SB\_MAG\_00001 using the barrnap software (version 0.9, <https://github.com/tseemann/barrnap>). In addition, 16S rRNA sequences were extracted from three reference genomes from the order Methyloirabilales, available in the NCBI (National Center for Biotechnology Information): Candidatus *Methyloirabilis oxyfera* (Ca. *M. oxyfera*) (NCBI:txid671143), Candidatus *Methyloirabilis limnetica* (Ca. *M. limnetica*) (NCBI: txid671143), and NC10 bacterium CSP1-5 (NCBI:txid1640516). Finally, we used all 16S rRNA sequences available in the SILVA database that showed at least 95% identity with our Methyloirabilota 16S rRNA sequences and the 16S rRNA sequence extracted from our MAG SB\_MAG\_00001 (34 sequences). The reference sequences from SILVA database were retrieved from marine and terrestrial ecosystems.

All sequences were aligned using the Mega X software<sup>42</sup> through the clustalW algorithm that uses progressive alignment methods<sup>43</sup>. This algorithm calculates an approximate distance matrix between pairs of sequences based on alignment scores. The phylogenetic tree was constructed by the maximum likelihood method with Bootstrap replications equal to 999.

## Results and discussion

**Microbial taxonomic diversity in sediments from the Brazilian continental slope.** The 16S rRNA gene sequencing of the 16 samples yielded a total of 573,850 quality-filtered reads, divided into 11,034 amplicon sequence variants (ASVs) (0.03 cut-off). Of those, 9244 ASVs were assigned to Bacteria and 1788 to Archaea. Richness and diversity assessed using Chao1 and Shannon indices (Table S2), did not change significantly across the types of seabed sampled (control, diapir, pockmark) and between the two sediment strata (surface and subsurface strata) (Table S3).

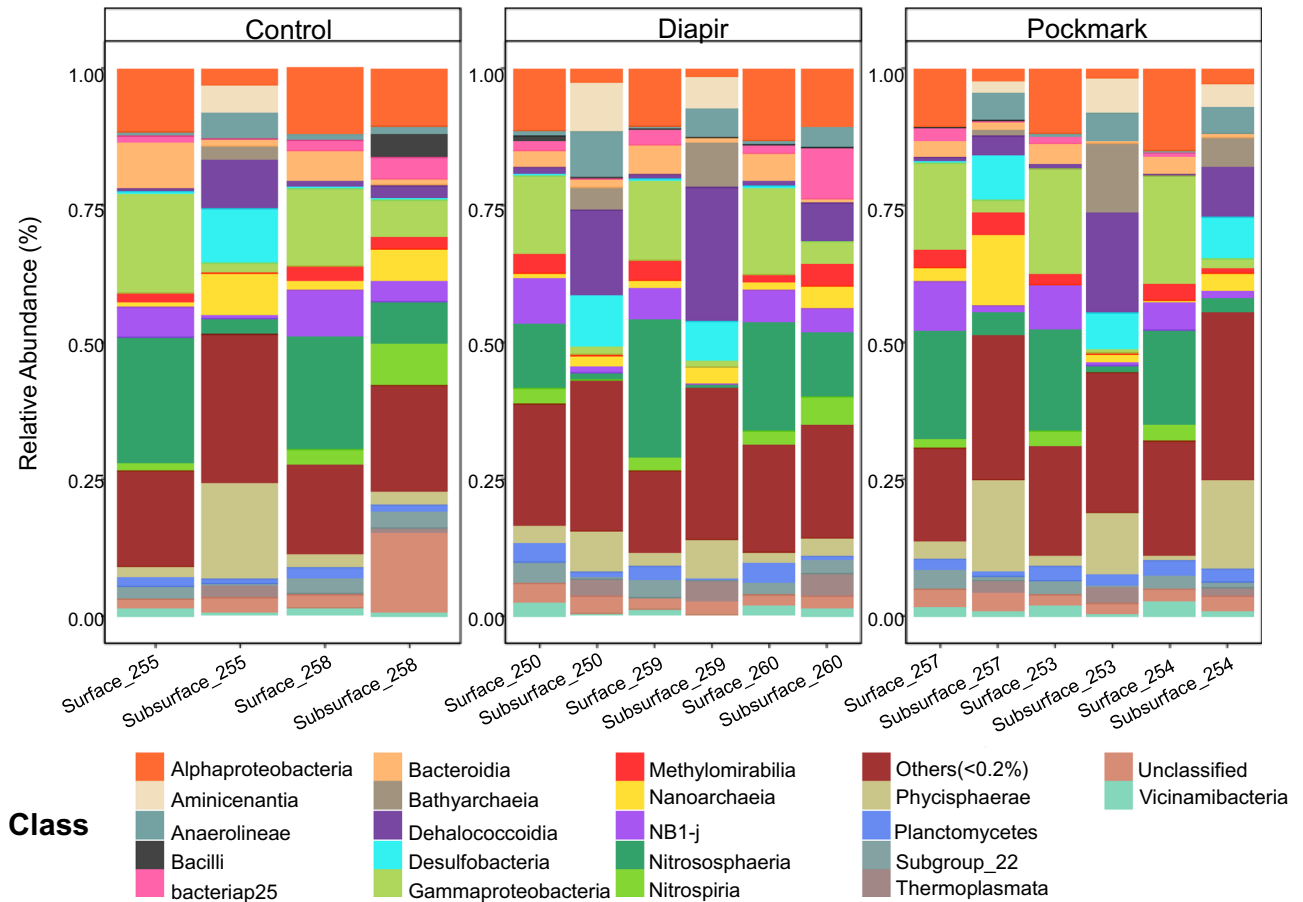
Surface sediments were dominated by the archaeal class Nitrososphaeria (Crenarchaeota) across all seabed types, accounting for up to 25% of the taxonomic assignments (Fig. 2). Nitrososphaeria is one of the most widely distributed classes of Archaea, found in a diversity of environments<sup>44,45</sup>, including marine water and sediment<sup>46,47</sup>. It comprises chemolithoautotrophic ammonia-oxidising taxa, which play an important role in the marine nitrogen and carbon cycles<sup>48</sup>. Alpha and Gammaproteobacteria comprised between 11 and 18% of the ASVs assignments. These classes have also been reported as part of the dominant groups in benthic marine environments, including pockmark sediments<sup>45,49–52</sup>.

The class NB1-J, previously described in sediment samples from active pockmarks<sup>52</sup>, was detected in surface sediments from the SB. The class Methyloirabilia, from the phylum Methyloirabilota (former NC10), was found in all surface samples, with an average abundance of approximately 2.6%. Members of this class have been identified in the most diverse environments, from freshwater to saline, and include methanotrophic and non-methanotrophic methylotrophic taxa<sup>24,53,54</sup>.

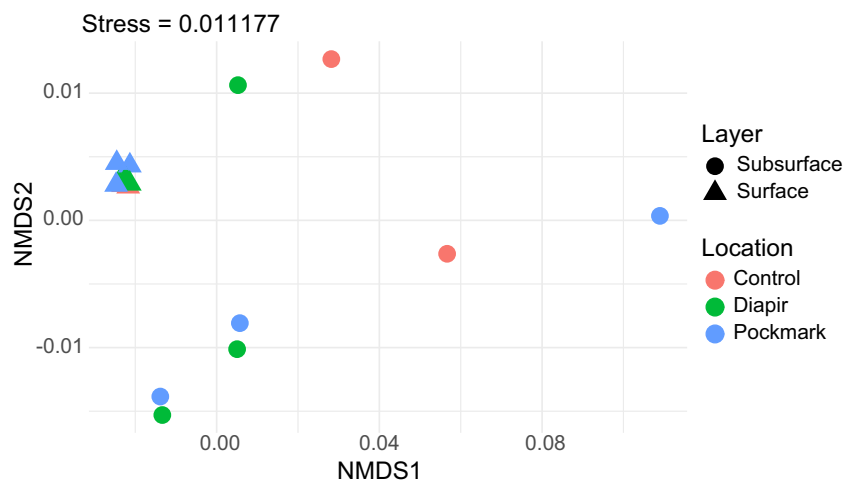
In the subsurface samples, the Dehalococcoidia represented up to 24% of the communities. Some members of this class can perform organohalide respiration, anaerobic respiration that uses halogenated organic compounds as terminal electron acceptors for hydrogen oxidation<sup>55</sup>. Microbial dehalogenation plays a significant role in the functioning of the halogen cycle, and many of these organisms are found in the marine environment, mainly in subsurface sediments<sup>55,56</sup>. The class Phycisphaerae (phylum Planctomycetota) was also prevalent across all subsurface samples from SB, reaching up to 17% of the communities. These organisms are aerobic or facultatively anaerobic and colonise a wide variety of ecosystems, from aquatic to terrestrial and even extreme environments such as desert, saline, and thermal soils<sup>57–60</sup>.

Desulfobacteria, a class known to contain sulphate-reduction bacteria, a key function in the sulphur cycling and anaerobic respiration<sup>61</sup>, presented relative abundance between 0.2 and 9.8% of the subsurface communities. The Methyloirabilia class, found in all analysed samples, represented approximately 1.5% of the communities in the subsurface samples. Nitrososphaeria comprised a much smaller proportion in the most profound strata than in the surface samples. By contrast, another Crenarchaeota class, the Bathyarchaeia, was found in higher proportions in the subsurface sediments. These organisms are widely distributed and abundant in marine sediments; however, the environmental factors that control their distribution are currently unclear<sup>62</sup>. They are metabolically diverse and indicated by Lazar et al.<sup>63</sup> as degraders of aromatic compounds and recalcitrant organic matter. The acetogenic ability to lithotrophically synthesise acetate from inorganic carbon has also been suggested through MAGs studies, as well as the potential ability to metabolise methane; however, these metabolisms were not yet confirmed by physiological studies since they were not yet cultivated in laboratory conditions<sup>53,64</sup>.

According to PERMANOVA analysis, seabed type was not a significant factor affecting the composition of the communities (Table S4). By contrast, 27% of the community variability ( $p < 0.001$ ) was explained by the vertical sediment strata—surface (0–2 cm) versus subsurface (16–18 cm or 22–24 cm). These findings agree with previous studies showing remarkable differences in prokaryotic communities along the sediment strata, which is attributed to the sharp changes in physical and chemical conditions with depth<sup>17,49,65,66</sup>. Another interesting pattern was revealed by NMDS ordination, where all surface sediment communities were concentrated in a tight cluster, indicating high similarity in their composition, while lower similarity was observed among subsurface samples (Fig. 3). As surface sediments are under direct contact with the pelagic environment, their biotic and abiotic characteristics suffer stronger influences from the recent deposition processes and exchanges with the water column. This aspect also contributes to the higher availability of organic carbon<sup>67,68</sup>. In addition, high-energy



**Figure 2.** Bar graphs showing the relative abundance of bacterial and archaeal classes in the Control, Diapir and Pockmark sediment samples collected in the Santos Basin. Surface=0–2 cm and subsurface=16–18 cm or 22–24 cm.



**Figure 3.** Non-metric multidimensional scale (NMDS) of the surface (0–2 cm) and subsurface (16–18 cm or 22–24 cm) sediment communities. Stress=0.011177. Geometric shapes indicate sediment strata and colours indicate collection sites.

electron acceptors such as oxygen and nitrate are often available in the surface sediments<sup>69</sup>. By contrast, deeper sediment layers may reflect events during the deposition, such as different sedimentation rates<sup>70</sup>, which may vary along the continental slope<sup>71,72</sup>.

The core microbiome analysis further supported these contrasting patterns for the community similarity when comparing surface and subsurface strata. In this analysis, we asked whether there would be ASVs common to all samples within each stratum, as well as to all samples regardless of the stratum (central core microbiome). While 80 ASVs were shared by all surface sediment samples (surface core microbiome), comprising archaeal and bacterial taxa from ten different phyla, the core microbiome from the deep strata was composed of only two ASVs, which were also the central core microbiome, i.e., present in all samples (Table S5). These two ASVs were assigned to the Methyloirabilaceae and Hyphomicrobiaceae families, according to SILVA database v.138. In two recent studies carried out in Santos Basin deep-sea sediments, the phylum Methyloirabolota was reported among the dominant groups across different bathymetries (from 450 to 1250 m)<sup>17</sup>, and in methane-enriched areas<sup>73</sup>. The Hyphomicrobiaceae family (Alphaproteobacteria) has been identified in several marine and non-marine habitats<sup>74,75</sup> and are morphologically and physiologically diverse, with most of their members known to perform aerobic chemoheterotrophic metabolism. However, some representatives, such as members of the genus *Hyphomicrobium*, can grow anaerobically by denitrification or fermentation<sup>75</sup>. Interestingly, as the Methyloirabiales, the family Hyphomicrobiaceae also comprises methanol assimilating representatives<sup>24,76,77</sup>, suggesting that C1 metabolising organisms could be widespread in the studied area. However, there are still many gaps in knowledge about the dynamics of methyloirabial microorganisms and their metabolic capabilities in deep-sea sediments.

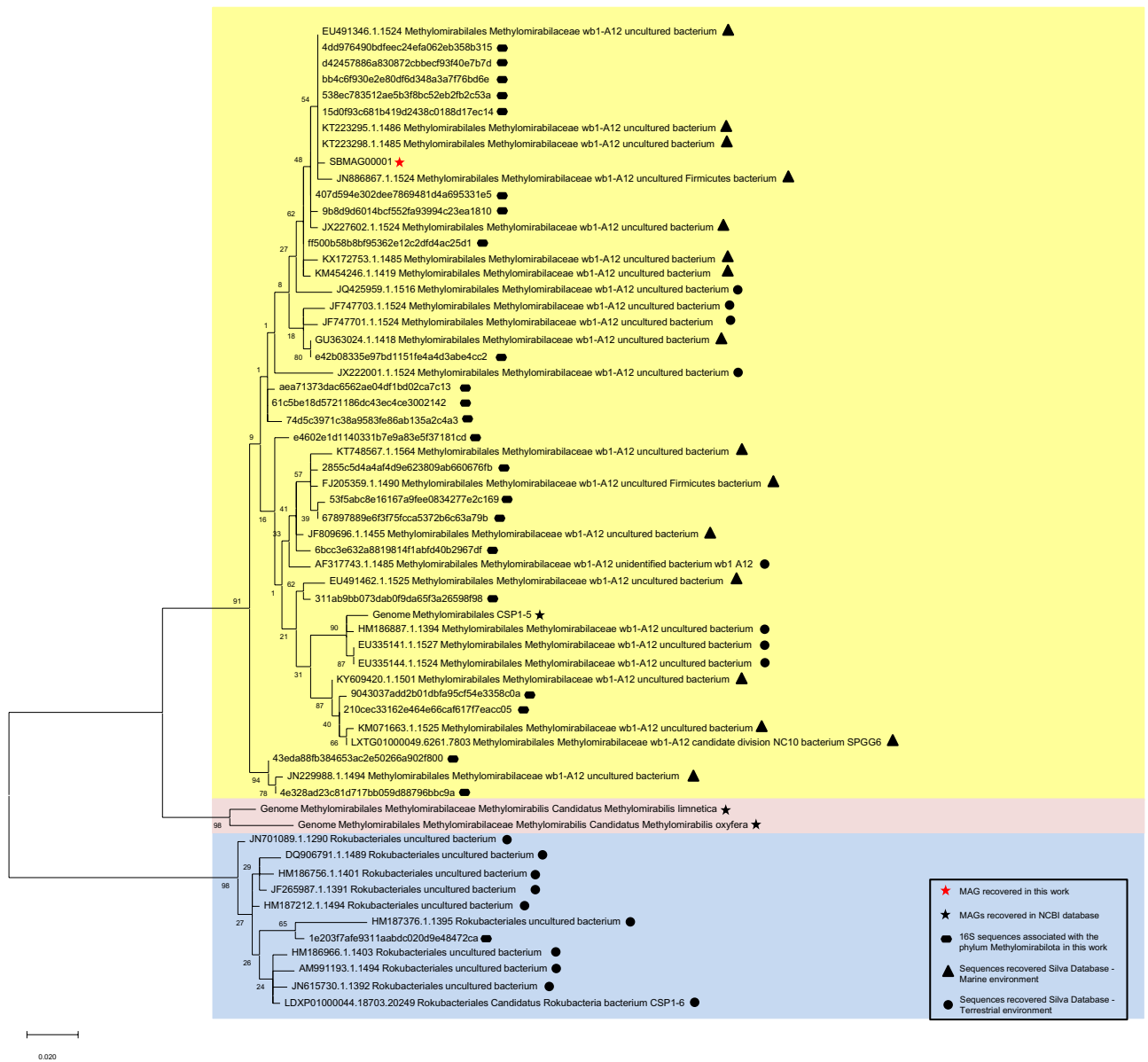
### SB\_MAG\_00001: a Methyloirabiales methyloirabial retrieved from SB surface sediment samples.

The metagenomic library constructed from three surface sediment samples yielded 77,922,888 raw reads. After quality filtering, the number of reads per sample was 23,406,011 (Surface\_255), 19,431,982 (Surface\_259) and 22,090,471 (Surface\_260). The co-assembly resulted in 108,018 contigs (> 1000 bp, N50 = 1492 bp), which were further binned into 34 MAGS: two high-, six medium-, and 26 low-quality drafts, according to genome quality standards suggested by Bowers et al.<sup>78</sup> (Table S6). SB\_MAG\_00001 exhibited the highest quality parameters (completeness of 94.2% and contamination of 2.1%), and represented 0.4% of mapped reads (30× coverage). According to the phylogenomic analysis of the GTDB-Tk, this MAG was assigned to the order Methyloirabiales, family CSP1-5 (ANI of 97.77% with CSP1-5 sp001443495 as the closest representative genome).

Considering the data presented, it is noteworthy that contrasting taxonomic assignments were observed for members of the Methyloirabiales order retrieved by the different sequencing approaches in our study. While using SILVA v.138 database to classify 16S rRNA sequences, all ASVs from the Methyloirabiales order were assigned to the family Methyloirabilaceae (including one of the two ASVs from the central core microbiome). By contrast, the genome of SB\_MAG\_00001 was classified within the family CSP1-5, according to GTDB-Tk. Although Methyloirabiales is still a poorly known taxon, this difference in taxonomy may have important implications for our conclusions regarding microbial function and carbon cycling, as these families have distinct key metabolic capabilities.

To date, there is no isolated culture from the order Methyloirabiales. The most studied organisms belong to the family Methyloirabilaceae (Ca. *Methyloirabilis oxyfera*, Ca. *M. limnetica*, and Ca. *M. lanthanidiphila*), which are known to carry out anaerobic oxidation of methane (AOM) coupled to nitrite reduction<sup>54,79,80</sup>. Unlike other AOM processes, they employ enzymatic machinery similar to aerobic methanotrophy, including its central enzyme, the methane monooxygenase. The oxygen required for this process is produced intracellularly by nitric oxide (NO) disproportionation<sup>80</sup>. However, this methane oxidising enzyme complex is absent in CSP1-5, a genome retrieved from aquifer sediment samples<sup>24</sup>, and characterised as a non-methanotrophic methyloirabial. The CSP1-5 genome shares 89% of the 16S rRNA sequence identity with Ca. *M. oxyfera*. The phylogenetic differences described between CSP1-5 and the Ca. *M. oxyfera* establish the boundaries of denitrification coupled with methane oxidation within the Methyloirabilota phylum<sup>24</sup>.

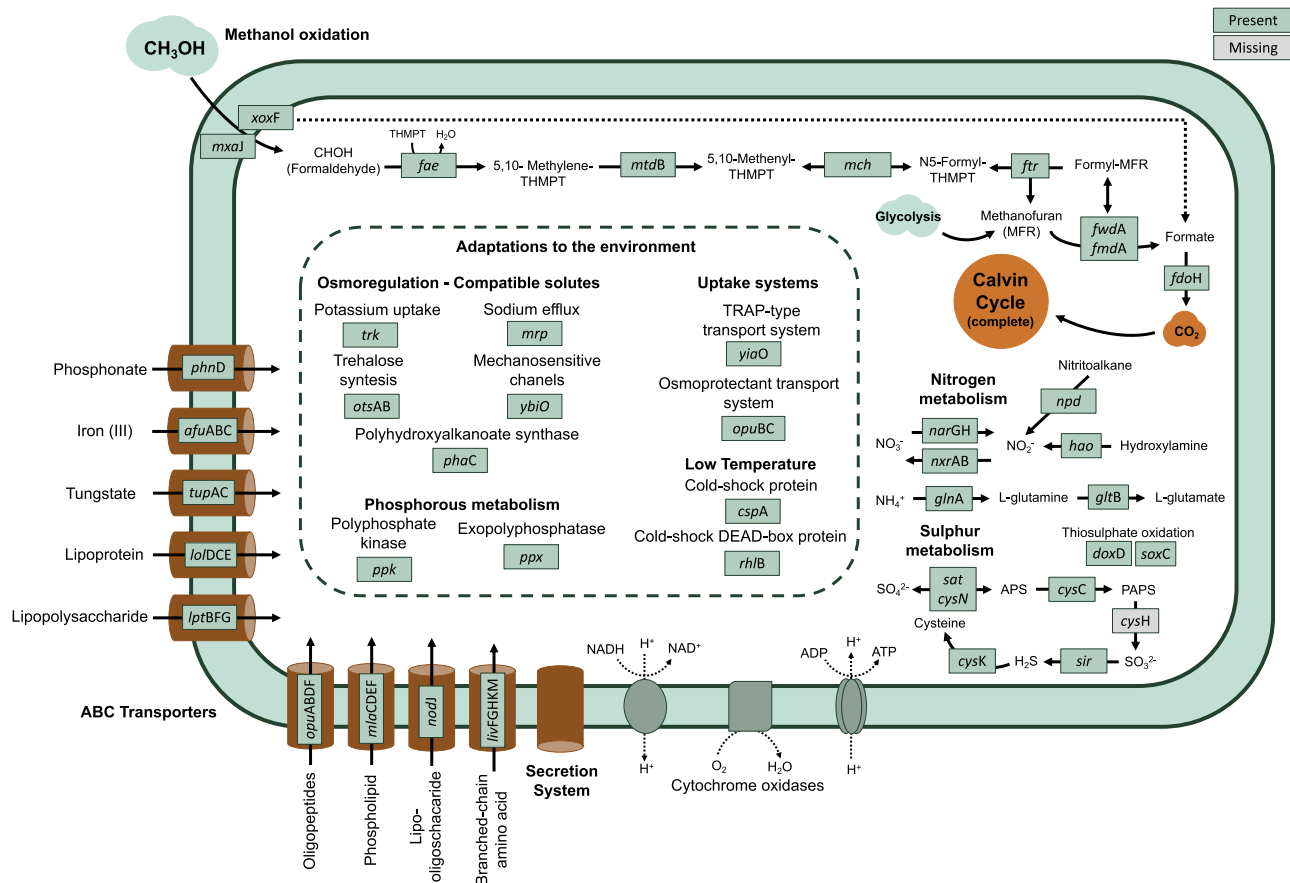
By inspecting the SILVA database (v.138), it is possible to verify that Methyloirabilaceae is the only family registered within the order Methyloirabiales in their library. Therefore, we asked whether the CSP1-5-like microorganisms in our samples could have been misclassified by the SILVA database. To answer this question, a phylogenetic tree was built using the SB 16S rRNA amplicon sequences classified into the Methyloirabilota phylum and the SSU fragments extracted from SB\_MAG\_00001 and from three reference genomes: Ca. *M. oxyfera*, Ca. *M. limnetica* and CSP1-5. In addition, 16S rRNA sequences downloaded from SILVA were also used (see methods for details). According to Ettwig et al. (2009)<sup>81</sup>, the phylum Methyloirabolota can be divided into four groups: A, B, C, and D. Groups A and B are considered the dominant branches and harbour the anaerobic methane-oxidising microorganisms. Members of the CSP1-5 family are housed in the group D. All other members of this phylum are allocated to clade C<sup>81</sup>. In the phylogenetic tree presented in Fig. 4, the 16S rRNA sequences clustered in three major clades: One clade was formed only by sequences extracted from the reference genomes of the methanotrophic taxa, Ca. *M. oxyfera* and Ca. *M. limnetica* (both group A)<sup>54,81</sup>. The largest cluster housed 22 ASVs obtained in this study by amplicon sequencing and the sequences extracted from the genomes of SB\_MAG\_00001 and CSP1-5. Therefore, the clustering pattern indicates that the SB amplicon sequences are more closely related to CSP1-5 than the methanotrophic genomes. This finding suggests that those sequences may have been misclassified by the SILVA database and could, in fact, belong to the same family as SB\_MAG\_00001, CSP1-5. In addition, this large cluster also contained 34 sequences downloaded from the SILVA database (retrieved from marine and terrestrial ecosystems) and classified within the family Methyloirabilaceae. According to this analysis, previous studies may have inaccurately reported the presence of methane-oxidising microorganisms and neglected the importance of methanol metabolism in those environments (Table S7). The third cluster comprised ten sequences from the SILVA database and only one ASV retrieved from this study by amplicon sequencing. All members of this cluster belong to the order Rokubacteriales. Interestingly, except for the ASV obtained in this study, all sequences in the third clade were recovered from terrestrial environments.



**Figure 4.** Phylogenetic tree comparing the 16S sequences affiliated to the order Methylospirales obtained in our samples, together with the 16S sequence recovered from SB MAG 00001. The analysis also includes 16S sequences recovered from the reference genomes: *Ca. Methylospiralis oxyfera*, *Ca. Methylospiralis limnetica* and NC10 bacterium CSP1–5, obtained through data deposited at NCBI (National Center for Biotechnology Information). In addition, 16S rRNA sequences retrieved from the Silva 138 database, with at least 95% similarity with the sequences from this study, were also used.

**Potential metabolisms and lifestyles of the SB\_MAG\_00001.** SB\_MAG\_00001 contains complete or nearly complete gene sets for the following central carbon and energy metabolism pathways: glycolysis, gluconeogenesis, pyruvate oxidation, TCA cycle, pentose phosphate pathway, and Calvin Cycle. The MAG contains genes for the lanthanide-dependent Xox-type methanol dehydrogenase (MDH), which can convert methanol to formaldehyde or directly to formate<sup>82–84</sup>. It has also been proposed that XoxF-MDH can oxidise formaldehyde to formate<sup>83</sup>. Several studies have suggested the widespread nature of Xox-MDH within methylospirales, with its functional relevance in the environment likely comparable with the vastly studied calcium-dependent MDH (Mxa-MDH).

The metabolic reconstruction in Fig. 5 presents the MAG’s complete pathway to oxidise formaldehyde to formate through the 5,6,7,8-tetrahydromethanopterin-dependent route, in addition to formate dehydrogenase, which can oxidise formate to CO<sub>2</sub><sup>80</sup>. CO<sub>2</sub> can be assimilated through Calvin Cycle, the only C fixation pathway found in this genome and other known Methylospirales<sup>80,85</sup>. Accordingly, the Serine Cycle for formaldehyde assimilation is absent. Using enrichment cultures and carbon isotope tracing experiments, Rasigraf et al. (2014)<sup>85</sup> demonstrated that the methanotrophic *M. oxyfera* assimilated exogenous <sup>13</sup>C CO<sub>2</sub>, when provided with CH<sub>4</sub>, indicating autotrophic CO<sub>2</sub> fixation. The question arises whether these non-methanotrophic methylospirales



**Figure 5.** Model prediction of SB\_MAG\_00001 metabolisms. The model includes potential capabilities related to methanol, nitrogen (N) and sulphur (S) metabolisms, as well the ABC transporters and the adaptations to the environment. The model was constructed with the genes annotated by DRAM, predicted proteins annotated by GhostKoala and the hidden Markov model (HMM) searches (Supplementary Table 8).

counterparts could also assimilate exogenous  $\text{CO}_2$  (and not only from the formaldehyde degradation). Considering the wide distribution of these organisms in the deep-sea sediments of the Santos Basin slope presented in our study, this could represent an overlooked primary production process in the area. However, experimental demonstration of this capability would be required.

Microorganisms inhabiting continental slope sediments may endure a wide range of conditions, including oligotrophic environments, low temperature, and high hydrostatic pressure (HHP). Such conditions may select organisms with suitable niches, and by exploring the metabolic potential of SB\_MAG\_00001 we could shed light into the ecology and adaptation of this microorganism. Living in oligotrophic sediments demands metabolic strategies to cope with scarce and oscillating resources. In this regard, methylotrophy might represent an advantageous trait, considering that C1 compounds are ubiquitous in the ocean<sup>86–89</sup>. In addition to methanol, other C1 compounds such as methane, methyl halides, methylated amines, and methylated sulphur compounds are also commonly found in the marine environment<sup>89,90</sup>. Studies have suggested the importance of methylotrophic microorganisms for the turnover these C1 compounds, and that microbial activity prevents their accumulation in marine sediments<sup>91,92</sup>.

In addition to carbon substrate, metabolic capabilities related to nutrient cycling can reveal ecological strategies to couple with the availability of reduced compounds and electron acceptors. For instance, SB\_MAG\_00001 contains genes for the first step of the dissimilatory nitrate reduction and denitrification (*narGH*), pathways used as alternative respiratory pathways under low levels of oxygen by several microorganisms<sup>93,94</sup>. Furthermore, *nxrAB*, involved in nitrite oxidation, and the gene *hao*, which converts hydroxylamine to nitrite, are also present. As for sulphur cycling, genes related to assimilatory sulphate reduction (ASR) (*sat*, *cysN*, *cysC*, *sir*, *cysK*), and thiosulphate oxidation (*sox*, *doxD*) were annotated. ASR is a fundamental metabolic route, as sulphur is an essential element in all organisms present in biomolecules, such as amino acids<sup>95</sup>. In addition, thiosulphate can be an important intermediate in the sulphur cycle in marine sediments and it might be generated from the anoxic sulphide oxidation<sup>96</sup>.

Regarding phosphorus metabolism, genes encoding for polyphosphate kinase (PPK) and exopolyphosphatase (PPX) were detected. These enzymes are responsible for polyP accumulation and degradation, a trait that may confer an advantage in environments under high oscillation in phosphate availability and other stress types<sup>97,98</sup>. In addition, the presence of the gene for phosphonate transport (*phnD*) indicates a potential use of organic phosphorus. Besides *phnD*, other transporters provided some indications of the potential ecophysiology of this



methylotroph, including transporters for Iron, glutamate/ aspartate, phospholipid/ cholesterol/ gamma-HCH, amino acids, and tungstate (Fig. 5).

Under deep-sea conditions, adaptations for psychrophilic and piezophilic lifestyles may confer advantages. Our sampling points ranged from 433 to 747 m deep where water temperatures can be as low as 5 °C for the Antarctic Intermediate Water mass<sup>28</sup>. Some traits, such as the expression of cold and shock proteins can have key roles in the cold seafloor<sup>99</sup>. SB\_MAG\_00001 contains *cspA* and *rhlB* genes, which encode for the cold-shock protein and cold-shock dead-box protein-A, respectively, and have been suggested to have a role in the adaptation to cold conditions<sup>100,101</sup>.

One of the major findings in cellular adaptations to high hydrostatic pressure conditions is the accumulation of solutes in the bacteria, which may play the role of a “piezolyte” acting as protein-stabilising solutes<sup>102</sup>. Accumulation of protein-stabilising solutes, such as  $\beta$ -hydroxybutyrate (PHB), is often observed in organisms living under HHP<sup>94</sup>. Polyhydroxyalkanoate synthase (*phaC*), a gene related to PHB biosynthesis, is present in SB\_MAG\_00001. Compatible solutes can confer resistance to multiple stresses, including hydrostatic and osmotic pressure<sup>103</sup>. Other genes related to compatible solutes were found in SB\_MAG\_00001: the *trk* system potassium uptake protein and the monovalent cation:H<sup>+</sup> antiporter, and CPA1 family *mrp*, for sodium efflux. The genes for TRAP-type transport system periplasmic protein (*viaO*) and trehalose synthesis (*otsAB*) seem to be present only in the CSP1-5 cluster, while the osmoprotectant transport system (*opuBC*) and the mechanosensitive channels (*ybiO*) are also found in the genomes of the methanotrophic Methyloirabilales.

### Concluding remarks

We studied the prokaryotic communities in sediments in pockmark and salt diapir fields from the Continental Slope in Santos Basin. Using a combination of metabarcoding and metagenomic approaches associated with phylogenetic tools, we observed that a non-methanotrophic methylotroph from the order Methyloirabilales was widespread across all samples and was the highest-quality MAG retrieved. We explored the metabolic potential of this genome (classified into the family CSP1-5) and described its methanol oxidising capability, along with several genes with the potential to improve the fitness of the organism in the deep-sea environment. The widespread nature of this organism suggests a potential important role of methanol metabolism in this continental slope area. We further argued whether it could contain an overlooked autotrophic CO<sub>2</sub> fixation pathway.

The results also provide evidence that studies based only on metabarcoding may lead to misclassification of the members of the Methyloirabilales, which has profound relevance for the conclusions regarding the roles of the organisms in the environment, as the order contains methanotrophic (Methyloirabilaceae) and non-methanotrophic (CSP1-5) members. Ribosomal sequences misclassified as Methyloirabilaceae were retrieved from various environments, and, therefore, the relevance of methanol metabolism may be neglected in previous studies.

### Data availability

16S rRNA gene sequencing data are available in the National Center for Biotechnology Information Sequence Read Archives under BioProject ID PRJNA818533. Metagenome raw sequences are available in the GenBank repository under BioProject ID PRJNA818670. The MAG SB\_MAG\_00001 was deposited in Figshare under <https://doi.org/10.6084/m9.figshare.20080031>.

Received: 12 August 2022; Accepted: 25 July 2023

Published online: 07 August 2023

### References

- Romans, B. W. & Graham, S. A. A deep-time perspective of land–ocean linkages in the sedimentary record. *Annu. Rev.* <https://doi.org/10.1146/annurev-marine-121211-172426> (2013).
- Smith, S. V. & Hollibaugh, J. T. Coastal metabolism and the ocean organic carbon balance. *Rev. Geophys.* **31**, 75–89 (1993).
- Bauer, J. E. & Druffel, E. R. M. Ocean margins as a significant source of organic matter to the deep open ocean. *Nature* **392**, 482–485 (1998).
- Soetaert, K., Herman, P. M. J., Middelburg, J. J. & Heip, C. Assessing organic matter mineralization, degradability and mixing rate in an ocean margin sediment (Northeast Atlantic) by diagenetic modeling. *J. Mar. Res.* **56**, 519–534 (1998).
- Snelgrove, P. V. R. *et al.* Global carbon cycling on a heterogeneous sea floor. *Front. Microbiol.* **14**, 33 (2018).
- Torsvik, T. H., Rouse, S., Labails, C. & Smethurst, M. A. A new scheme for the opening of the South Atlantic Ocean and the dissection of an Aptian salt basin. *Geophys. J. Int.* **177**, 1315–1333 (2009).
- Goffredi, S. K. & Orphan, V. J. Bacterial community shifts in taxa and diversity in response to localized organic loading in the deep sea. *Environ. Microbiol.* **12**, 344–363 (2010).
- García, M. *et al.* Contourite erosive features caused by the Mediterranean out flow water in the Gulf of Cadiz : Quaternary tectonic and oceanographic implications. *Mar. Geol.* **257**, 24–40 (2009).
- De Mahiques, M. M. *et al.* Inorganic and organic geochemical fingerprinting of sediment sources and ocean circulation on a complex continental margin (São Paulo Bight, Brazil). *Ocean Sci.* **13**, 209–222 (2017).
- Hovland, M., Gardner, J. V. & Judd, A. G. The significance of pockmarks to understanding fluid flow processes and geohazards. *Geofluids* **2**, 127–136 (2002).
- Vaular, E. N., Barth, T. & Haflidason, H. The geochemical characteristics of the hydrate-bound gases from the Nyegga pockmark field, Norwegian Sea. *Org. Geochem.* **41**, 437–444 (2010).
- Nelson, C., Baraza, J. & Maldonado, A. Mediterranean undercurrent sandy contourites, Gulf of Cadiz, Spain. *Sediment. Geol.* **82**, 103–131 (1993).
- Calder, B. R., Fonseca, L. & Francolin, J. B. Automatic estimation of the seafloor geomorphology of the Santos Basin, Brazil. *Eos Trans. Am. Geophys. Union* **83**, F728 (2002).
- Sumida, P. Y. G., Yoshinaga, M. Y., Madureira, L. A. S. P. & Hovland, M. Seabed pockmarks associated with deepwater corals off SE Brazilian continental slope, Santos Basin. *Mar. Geol.* **207**, 159–167 (2004).

15. dos Santos, R. *et al.* Metal/Ca ratios in pockmarks and adjacent sediments on the SW Atlantic slope: Implications for redox potential and modern seepage. *J. Geochem. Explor.* **192**, 163–173 (2018).
16. Ramos, R. B., Felício, R., Schattner, U., Cesar, R. & Figueira, L. Deep pockmarks as natural sediment traps: A case study from southern Santos Basin (SW Atlantic upper slope). *Geo-Mar. Lett.* **40**, 989–999 (2020).
17. Bendia, A. G. *et al.* Microbial perspective on the giant carbonate ridge Alpha Crucis (Southwestern Atlantic upper slope). *FEMS Microbiol. Ecol.* **97**, 1–14 (2021).
18. Barcellos, R. L., da Silva Sales de Melo, M. C., Sial, A. N. & do Vaz Manso, V. A. Sedimentary organic matter characterization on a tropical continental shelf in northeastern Brazil. *Int. J. Geosci.* **11**, 393–419 (2020).
19. Heikes, B. G. *et al.* Atmospheric methanol budget and ocean implication. *Glob. Biogeochem. Cycles* **16**, 80–1–80–13 (2002).
20. Bartlett, R. *et al.* Lithological controls on biological activity and groundwater chemistry in Quaternary sediments. *Hydrol. Process.* **24**, 726–735 (2010).
21. Dixon, J. L., Beale, R. & Nightingale, P. D. Rapid biological oxidation of methanol in the tropical Atlantic: Significance as a microbial carbon source. *Biogeosciences* **8**, 2707–2716 (2011).
22. Dixon, J. L. & Nightingale, P. D. Fine-scale variability in methanol uptake and oxidation: From the microlayer to 1000 m. *Biogeosciences* **9**, 2961–2972 (2012).
23. Torres-Beltrán, M. *et al.* The metabolic core of the prokaryotic community from deep-sea sediments of the southern Gulf of Mexico shows different functional signatures between the continental slope and abyssal plain. *PeerJ* **9**, 12474 (2021).
24. Hug, L. A. *et al.* Critical biogeochemical functions in the subsurface are associated with bacteria from new phyla and little studied lineages. *Environ. Microbiol.* **18**, 159–173 (2016).
25. de Souza, L. S. & Sgarbi, G. N. C. The Santos Basin in Brazil: Geology, exploration and production of oil and natural gas. *Bol. Geol.* **41**, 175–195 (2019).
26. Moller, O. O., Piola, A. R., Cristina, A., Campos, E. J. D. & Mo, O. O. The effects of river discharge and seasonal winds on the shelf off southeastern South America. *Continental Shelf Res.* **28**, 1607–1624 (2008).
27. Silveira, I. C. A., Schmidt, A. C. K., Campos, E. J. D., Godoi, S. S. & Ikeda, Y. A Corrente do Brasil ao Largo da Costa Leste Brasileira. *Rev. Bras. Oceanogr.* **48**, 171–183 (2000).
28. Dottori, M., Dalsenter, I. N. B., Napolitano, D. C. & da Silveira, I. C. A. A dataset of temperature and salinity in the South Brazil Bight: Identifying water mass interfaces. *Data Br.* **20**, 1297–1304 (2018).
29. Quince, *et al.* Removing noise from pyrosequenced amplicons. *BMC Bioinform.* **12**, 834–839 (2011).
30. Parada, A. E., Needham, D. M. & Fuhrman, J. A. Every base matters: Assessing small subunit rRNA primers for marine microbiomes with mock communities, time series and global field samples. *Environ. Microbiol.* **18**, 1403–1414 (2016).
31. Bolyen, E. *et al.* Reproducible, interactive, scalable and extensible microbiome data science using QIIME 2. *Nat. Biotechnol.* **37**, 852–857 (2019).
32. Callahan, B. J. *et al.* DADA2: High-resolution sample inference from Illumina amplicon data. *Nat. Methods* **13**, 581–583 (2016).
33. McMurdie, P. J. & Holmes, S. Phyloseq: An R package for reproducible interactive analysis and graphics of microbiome census data. *PLoS ONE* **8**, 61217 (2013).
34. Eren, A. M. *et al.* Anvi'o: An advanced analysis and visualization platform for 'omics data. *PeerJ* <https://doi.org/10.7287/peerj.preprints.1275> (2015).
35. Anderson, M. J. Non-parametric MANOVA. *Austral. Ecol.* **14**, 32–46 (2001).
36. Li, D., Liu, C. M., Luo, R., Sadakane, K. & Lam, T. W. MEGAHIT: An ultra-fast single-node solution for large and complex metagenomics assembly via succinct de Bruijn graph. *Bioinformatics* **31**, 1674–1676 (2015).
37. Alneberg, J. *et al.* CONCOCT: Clustering cONTigs on COverage and COmposition. 1–28 (2013).
38. Parks, D. H., Imelfort, M., Skennerton, C. T., Hugenholtz, P. & Tyson, G. W. CheckM: Assessing the quality of microbial genomes recovered from isolates, single cells, and metagenomes. *Genome Res.* **25**, 1043–1055 (2015).
39. Chaumeil, P. A., Mussig, A. J., Hugenholtz, P. & Parks, D. H. GTDB-Tk: A toolkit to classify genomes with the genome taxonomy database. *Bioinformatics* **36**, 1925–1927 (2020).
40. Seemann, T. Prokka: Rapid prokaryotic genome annotation. *Bioinformatics* **30**, 2068–2069 (2014).
41. Langmead, B., Wilks, C., Antonescu, V. & Charles, R. Scaling read aligners to hundreds of threads on general-purpose processors. *Bioinformatics* **35**, 421–432 (2019).
42. Kumar, S., Stecher, G., Li, M., Nnyaz, C. & Tamura, K. MEGA X: Molecular evolutionary genetics analysis across computing platforms. *Mol. Biol. Evol.* **35**, 1547–1549 (2018).
43. Thompson, J. D., Higgins, D. G. & Gibson, T. J. CLUSTAL W: Improving the sensitivity of progressive multiple sequence alignment through sequence weighting, position-specific gap penalties and weight matrix choice. *Nucleic Acids Res.* **22**, 4673–4680 (1994).
44. Stahl, D. A. & De La Torre, J. R. Physiology and diversity of ammonia-oxidizing archaea. *Annu. Rev. Microbiol.* **66**, 83–101 (2012).
45. Stieglmeier, M. *et al.* *Nitrososphaera viennensis* gen. nov., sp. nov., an aerobic and mesophilic, ammonia-oxidizing archaeon from soil and a member of the archaeal phylum Thaumarchaeota. *Int. J. Syst. Evol. Microbiol.* **64**, 2738–2752 (2014).
46. Li, M. *et al.* Distinct distribution patterns of ammonia-oxidizing archaea and bacteria in sediment and water column of the Yellow River estuary. *Sci. Rep.* **8**, 1–10 (2018).
47. Pitcher, A. *et al.* Crenarchaeol dominates the membrane lipids of *Candidatus Nitrososphaera gargensis*, a thermophilic Group I.1b Archaeon. *ISME J.* **4**, 542–552 (2010).
48. Kerou, M., Eloy Alves, R. J. & Schleper, C. Nitrososphaeria. *Bergey's Man. Syst. Archaea Bact.* <https://doi.org/10.1002/9781118960608.cbm00055> (2016).
49. Shubenkova, O. V., Likhoshvai, A. V., Kanapatskii, T. A. & Pimenov, N. V. Microbial community of reduced pockmark sediments (Gdansk Deep, Baltic Sea). *Microbiology* **79**, 799–808 (2010).
50. Haverkamp, T. H. A., Hammer, Ø. & Jakobsen, K. S. Linking geology and microbiology: Inactive pockmarks affect sediment microbial community structure. *PLoS ONE* **9**, 85990 (2014).
51. Giovannelli, D. *et al.* Diversity and distribution of prokaryotes within a shallow-water pockmark field. *Front. Microbiol.* **7**, 1–21 (2016).
52. Idczak, J. *et al.* Science of the total environment a geophysical, geochemical and microbiological study of a newly discovered pockmark with active gas seepage and submarine groundwater discharge (MET1-BH, central Gulf of Gdańsk, southern Baltic Sea). *Sci. Total Environ.* **742**, 140306 (2020).
53. He, Z. *et al.* Anaerobic oxidation of methane coupled to nitrite reduction by halophilic marine NC10 bacteria. *Appl. Environ. Microbiol.* **81**, 5538–5545 (2015).
54. Graf, J. S. *et al.* Bloom of a denitrifying methanotroph, 'Candidatus *Methylomirabilis limnetica*', in a deep stratified lake. *Environ. Microbiol.* **20**, 2598–2614 (2018).
55. Wasmund, K. *et al.* Genome sequencing of a single cell of the widely distributed marine subsurface Dehalococcoidia, phylum Chloroflexi. *ISME J.* **8**, 383–397 (2014).
56. Fagervold, S. K., Watts, J. E. M., May, H. D. & Sowers, K. R. Sequential reductive dechlorination of meta-chlorinated polychlorinated biphenyl congeners in sediment microcosms by two different Chloroflexi phylotypes. *Appl. Environ. Microbiol.* **71**, 8085–8090 (2005).

57. Andrew, D. R. *et al.* Abiotic factors shape microbial diversity in Sonoran desert soils. *Appl. Environ. Microbiol.* **78**, 7527–7537 (2012).
58. Bohorquez, L. C. *et al.* In-depth characterization via complementing culture-independent approaches of the microbial community in an acidic hot spring of the Colombian Andes. *Microb. Ecol.* **63**, 103–115 (2012).
59. Schneider, D., Arp, G., Reimer, A., Reitner, J. & Daniel, R. Phylogenetic analysis of a microbialite-forming microbial mat from a hypersaline lake of the Kiritimati Atoll, Central Pacific. *PLoS ONE* **8**, 66662 (2013).
60. Lage, O. M. & Bondoso, J. Planctomycetes and macroalgae, a striking association. *Front. Microbiol.* **5**, 1–9 (2014).
61. Jackson, B. E., Bhupathiraju, V. K., Tanner, R. S., Woese, C. R. & McInerney, M. J. *Syntrophus aciditrophicus* sp. nov., a new anaerobic bacterium that degrades fatty acids and benzoate in syntrophic association with hydrogen-using microorganisms. *Arch. Microbiol.* **171**, 107–114 (1999).
62. Haroon, M. F. *et al.* Anaerobic oxidation of methane coupled to nitrate reduction in a novel archaeal lineage. *Nature* **500**, 567–570 (2013).
63. Lazar, C. S. *et al.* Genomic evidence for distinct carbon substrate preferences and ecological niches of Bathyarchaeota in estuarine sediments. *Environ. Microbiol.* **18**, 1200–1211 (2016).
64. Evans, P. N. *et al.* Methane metabolism in the archaeal phylum Bathyarchaeota revealed by genome-centric metagenomics. *Science (80-)* **350**, 434–438 (2015).
65. Edlund, A., Hårdeman, F., Jansson, J. K. & Sjöling, S. Active bacterial community structure along vertical redox gradients in Baltic Sea sediment. *Environ. Microbiol.* **10**, 2051–2063 (2008).
66. Roalkvam, I. *et al.* New insight into stratification of anaerobic methanotrophs in cold seep sediments. *FEMS Microbiol. Ecol.* **78**, 233–243 (2011).
67. Henrichs, S. M. Early diagenesis of organic matter in marine sediments: Progress and perplexity. *Mar. Chem.* **39**, 119–149 (1992).
68. Arndt, S. *et al.* Quantifying the degradation of organic matter in marine sediments: A review and synthesis. *Earth-Sci. Rev.* **123**, 53–86 (2013).
69. Durbin, A. M. & Teske, A. Microbial diversity and stratification of South Pacific abyssal marine sediments. *Environ. Microbiol.* **13**, 3219–3234 (2011).
70. Jovane, L. *Metodologias em Testemunhos Marinhos*. (2021).
71. Morono, Y. *et al.* Carbon and nitrogen assimilation in deep seafloor microbial cells. *Proc. Natl. Acad. Sci. USA* **108**, 18295–18300 (2011).
72. Jørgensen, B. B. Deep seafloor microbial cells on physiological standby. *Proc. Natl. Acad. Sci. USA* **108**, 18193–18194 (2011).
73. Nakamura, F. M. *et al.* Methane-related community of a carbonate-enriched pockmark, Brazilian Southeastern continental slope. *Ocean Coast. Res.* **70**, 1–21 (2022).
74. Hwang, C. Y. & Cho, B. C. *Cucumibacter marinus* gen. nov., sp. nov., a marine bacterium in the family Hyphomicrobiaceae. *Int. J. Syst. Evol. Microbiol.* **58**, 1591–1597 (2008).
75. Pershina, E. V. *et al.* Investigation of the core microbiome in main soil types from the East European plain. *Sci. Total Environ.* **631–632**, 1421–1430 (2018).
76. Osaka, T. *et al.* Identification of acetate- or methanol-assimilating bacteria under nitrate-reducing conditions by stable-isotope probing. *Microb. Ecol.* **52**, 253–266 (2006).
77. Kim, H. S., Srinivasan, S. & Lee, S. S. *Methyloterrigena soli* gen. nov., sp. nov., a methanol-utilizing bacterium isolated from chloroethylene-contaminated soil. *Int. J. Syst. Evol. Microbiol.* **66**, 101–106 (2016).
78. Bowers, R. M. *et al.* Minimum information about a single amplified genome (MISAG) and a metagenome-assembled genome (MIMAG) of bacteria and archaea. *Nat. Biotechnol.* **35**, 725–731 (2017).
79. Ettwig, K. F., Butler, M. K., Paslier, D. L., Pelletier, E. & Mangenot, S. Nitrite-driven anaerobic methane oxidation by oxygenic bacteria. *Nature* **464**, 543–548 (2010).
80. Versantvoort, W. *et al.* Comparative genomics of *Candidatus Methyloirabilis* species and description of *Ca. Methyloirabilis lanthanidiphila*. *Front. Microbiol.* **9**, 1–10 (2018).
81. Ettwig, K. F., Van Alen, T., Van De Pas-Schoonen, K. T., Jetten, M. S. M. & Strous, M. Enrichment and molecular detection of denitrifying methanotrophic bacteria of the NC10 phylum. *Appl. Environ. Microbiol.* **75**, 3656–3662 (2009).
82. Vorobev, A., Beck, D. A. C., Kalyuzhnaya, M. G., Lidstrom, M. E. & Chistoserdova, L. Comparative transcriptomics in three *Methylophilaceae* species uncover different strategies for environmental adaptation. *PeerJ* **2013**, 115 (2013).
83. Pol, A. *et al.* Rare earth metals are essential for methanotrophic life in volcanic mudpots. *Environ. Microbiol.* **16**, 255–264 (2014).
84. Vu, H. N. *et al.* Lanthanide-dependent regulation of methanol oxidation systems in *Methylobacterium extorquens* AM1 and their contribution to methanol growth. *J. Bacteriol.* **198**, 1250–1259 (2016).
85. Rasigraf, O., Kool, D. M., Jetten, M. S. M., Sinningh-Damsté, J. S. & Ettwig, K. F. Autotrophic carbon dioxide fixation via the Calvin–Benson–Bassham cycle by the denitrifying methanotroph ‘*Candidatus Methyloirabilis oxyfera*’. *Appl. Environ. Microbiol.* **80**, 2451–2460 (2014).
86. Carpenter, L. J., Archer, S. D. & Beale, R. Ocean-atmosphere trace gas exchange. *Chem. Soc. Rev.* **41**, 6473–6506 (2012).
87. Beale, R. & Airs, R. Quantification of glycine betaine, choline and trimethylamine N-oxide in seawater particulates: Minimisation of seawater associated ion suppression. *Anal. Chim. Acta* **938**, 114–122 (2016).
88. Dixon, J. L., Sargeant, S., Nightingale, P. D. & Colin Murrell, J. Gradients in microbial methanol uptake: Productive coastal upwelling waters to oligotrophic gyres in the Atlantic Ocean. *ISME J.* **7**, 568–580 (2013).
89. Dinasquet, J., Tiirola, M. & Azam, F. Enrichment of bacterioplankton able to utilize one-carbon and methylated compounds in the coastal Pacific ocean. *Front. Mar. Sci.* **5**, 1–13 (2018).
90. Halsey, K. H., Carter, A. E. & Giovannoni, S. J. Synergistic metabolism of a broad range of C1 compounds in the marine methylotrophic bacterium HTCC2181. *Environ. Microbiol.* **14**, 630–640 (2012).
91. Anda, V. D. *et al.* Brockarchaeota, a novel archaeal lineage capable of methylotrophy. *Res. Sq.* **33**, 1–18 (2020).
92. Lidbury, I., Mausz, M. A., Scanlan, D. J. & Chen, Y. Identification of dimethylamine monoxygenase in marine bacteria reveals a metabolic bottleneck in the methylated amine degradation pathway. *ISME J.* **11**, 1592–1601 (2017).
93. Song, G. D., Liu, S. M., Marchant, H., Kuypers, M. M. M. & Lavik, G. Anammox, denitrification and dissimilatory nitrate reduction to ammonium in the East China Sea sediment. *Biogeosciences* **10**, 6851–6864 (2013).
94. Liu, P. *et al.* Physiological and genomic features of *Paraoceanicella profunda* gen. nov., sp. nov., a novel piezophile isolated from deep seawater of the Mariana Trench. *Microbiologyopen* **9**, 1–16 (2020).
95. Kushkevych, I. *et al.* Recent advances in metabolic pathways of sulfate reduction in intestinal bacteria. *Cells* **9**, 1–16 (2020).
96. Wasmund, K., Mußmann, M. & Loy, A. The life sulfuric: Microbial ecology of sulfur cycling in marine sediments. *Environ. Microbiol. Rep.* **9**, 323–344 (2017).
97. Kuroda, A. & Ohtake, H. Molecular analysis of polyphosphate accumulation in bacteria. *Biochemistry* **65**, 304–308 (2000).
98. Paula, F. S. *et al.* The potential for polyphosphate metabolism in Archaea and anaerobic polyphosphate formation in *Methanosarcina mazei*. *Sci. Rep.* **9**, 1–12 (2019).
99. Jian, H., Li, S., Tang, X. & Xiao, X. A transcriptome resource for the deep-sea bacterium *Shewanella piezotolerans* WP3 under cold and high hydrostatic pressure shock stress. *Mar. Genomics* **30**, 87–91 (2016).
100. Phadtare, S., Alsina, J. & Inouye, M. Cold-shock response and cold-shock proteins. *Curr. Opin. Microbiol.* **2**, 175–180 (1999).

101. Jiang, P., Ren, X., Wang, W., Niu, G. & Li, J. *Arthrobacter terrae* sp. nov., a psychrophilic actinobacterium with multi copies of capA gene isolated from Antarctic soil. *Antonie Van Leeuwenhoek* <https://doi.org/10.1007/s10482-022-01727-7> (2022).
102. Roumagnac, M. *et al.* Responses to the hydrostatic pressure of surface and subsurface strains of *Pseudothermotoga elfii* revealing the piezophilic nature of the strain originating from an oil-producing well. *Front. Microbiol.* **11**, 771 (2020).
103. Kerou, M. *et al.* Genomes of Thaumarchaeota from deep sea sediments reveal specific adaptations of three independently evolved lineages. *ISME J.* **15**, 2792–2808 (2021).

## Acknowledgements

We are thankful to Rosa Gamba (LECOM-IO/USP) and Raissa Basti Ramos (LAMA -IO/USP) for sampling and scientific support. We thank the captain and the crew of *R/V Alpha-Crucis* (IO-USP, FAPESP Process number 2010/06147-5) for supporting the sediment sampling and the Deep Carbon Observatory's Census of Deep Life initiative for their support with metagenome sequencing. We are very grateful for the support of Frederick Colwell and the assistance of Mitch Sogin, Joseph Vineis, Andrew Voorhis, and Hilary Morrison at MBL. This study was funded by Fundação de Amparo à Pesquisa do Estado de São Paulo (FAPESP) (Grants: 2014/08266-2 and 2020/14356-5); Coordenação de Aperfeiçoamento de Pessoal de Nível Superior-Brasil (CAPES)-Finance Code 001 (FVP PhD fellowship) and National Council of Scientific and Technological Development (CNPq), grant 300962/2018-5 (MM de M).

## Author contributions

M.M.d.M. and V.H.P. designed the study and collected the samples. F.V.P., performed the laboratory experiments. F.V.P., F.S.P., J.B.G. and A.G.B. analysed and discussed the data. F.V.P. and F.S.P. wrote the first draft. All authors critically revised the manuscript.

## Competing interests

The authors declare no competing interests.

## Additional information

**Supplementary Information** The online version contains supplementary material available at <https://doi.org/10.1038/s41598-023-39415-9>.

**Correspondence** and requests for materials should be addressed to F.S.P.

**Reprints and permissions information** is available at [www.nature.com/reprints](http://www.nature.com/reprints).

**Publisher's note** Springer Nature remains neutral with regard to jurisdictional claims in published maps and institutional affiliations.



**Open Access** This article is licensed under a Creative Commons Attribution 4.0 International License, which permits use, sharing, adaptation, distribution and reproduction in any medium or format, as long as you give appropriate credit to the original author(s) and the source, provide a link to the Creative Commons licence, and indicate if changes were made. The images or other third party material in this article are included in the article's Creative Commons licence, unless indicated otherwise in a credit line to the material. If material is not included in the article's Creative Commons licence and your intended use is not permitted by statutory regulation or exceeds the permitted use, you will need to obtain permission directly from the copyright holder. To view a copy of this licence, visit <http://creativecommons.org/licenses/by/4.0/>.

© The Author(s) 2023